



OIL SPILL COOPERATIVE

Member Newsletter

SUMMER 2017

IN THIS ISSUE

- Organizational Changes
- WCSS' 45th Anniversary
- Reflections From Our First Provincial Chairman
- ECRC Visit 2017
- Boat Handling Training
- Courses and Coop Exercises 2017

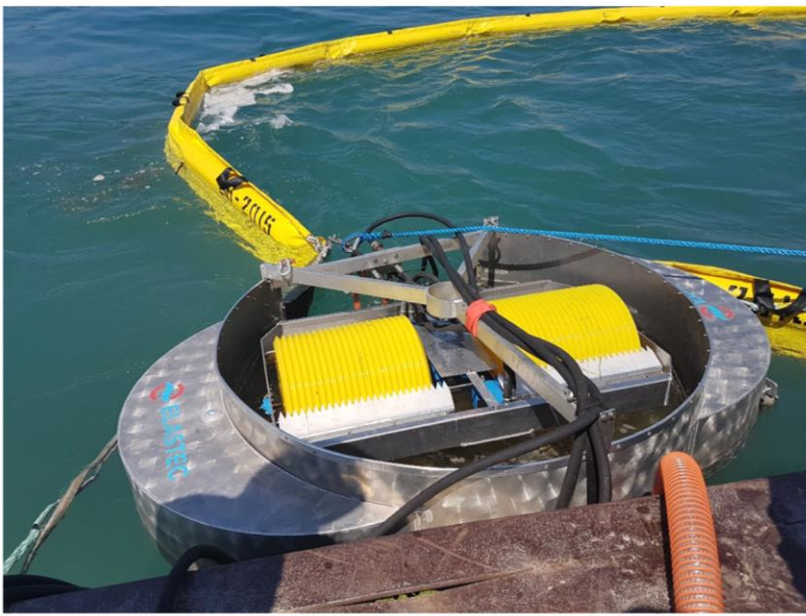
Due to the low flow on the river and the power and size of the seatruck watercraft, the crew was able to tie off to the dock, create a 'V' in the downstream side and deploy boom off the front of the boat while backing upstream. This is a very efficient and quick way to deploy but requires low flow and large vessels.



Seatruck deploying boom on St. Claire River

Two relatively new technologies were demonstrated at the session. The first is a Circus Skimmer/Elastec Grooved Drum skimmer combination.

This skimmer is an inline oil skimmer complete with an Elastec Grooved drum skimmer that is hooked up to conventional river boom. It has a circular chamber that accumulates oil and has a weir at the bottom allowing clean water to flow out and continue downstream. The oil floating on top is then recovered using a conventional Elastec grooved drum. It is ideal for fast river conditions and has proven successful at recovering 90% oil at 4km/hour.



Circus Skimmer/Elastec Grooved Drum Skimmer Combination